



## CLIP top BLUMOTION for thin doors 110°

Technical data sheet

[www.blum.com](http://www.blum.com)

 **blum**<sup>®</sup>

# CLIP top BLUMOTION for thin doors 110°



## Order specification

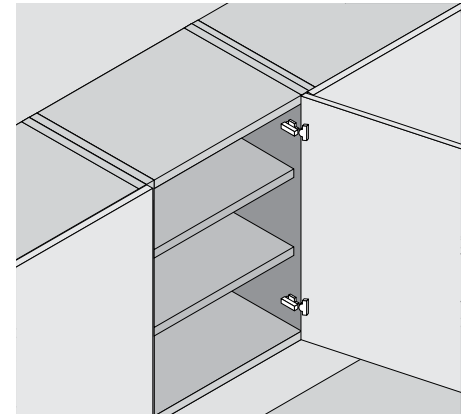
### Product



### Description

- Hinge for doors of 8–14 mm
- EXPANDO T fixing system
- CLIP top BLUMOTION with integrated BLUMOTION (and deactivation option)
- CLIP top with or without closing mechanism (spring)
- Zero protrusion (for inner pull-outs or pull-out surrounds)
- Tool-free mounting plate fixing
- 3-dimensional front adjustment

### Application



### Order specification

| Overlay application, dual application, inset application |           |          |               |            |
|--|-----------|----------|---------------|------------|
| Boss   | EXPANDO T |          | EXPANDO T     |            |
|  | Hinge     | Spring   | Colour        | Part no    |
| CLIP top BLUMOTION                                       | ●         | NI   ONS |               | 71B453T    |
| CLIP top   | ●         | NI       |               | 71T453T    |
| CLIP top   | ○         | NI       |               | 70T453T.TL |
| ● With spring  |           | NI       | Nickel plated |            |
| ○ Unsprung   |           | ONS      | Onyx black    |            |

| Boss               | Screw-on |        | Screw-on |            |
|--------------------|----------|--------|----------|------------|
|                    | Hinge    | Spring | Colour   | Part no    |
| CLIP top BLUMOTION | ●        | NI     |          | 71B4520    |
| CLIP top           | ●        | NI     |          | 71T4520    |
| CLIP top           | ○        | NI     |          | 70T4520.TL |

| Area of application and assembly recommendation                  |                             |
|--|-----------------------------|
| Materials tested by Blum   | Min. tightening torque (Nm) |
| Chipboard (transverse tensile strength > 0.4 N/mm <sup>2</sup> ) | 1.5                         |
| MDF (transverse tensile strength > 0.6 N/mm <sup>2</sup> )       | 1.5                         |
| HDF  | 2                           |
| HPL  | 2                           |
| Mineral composites   | 2                           |
| Nero Assoluto natural granite stone                              | 3                           |
| Artificial stone – quartz composite                              | 3                           |
| Ceramic plates   | 3                           |

### EXPANDO T area of application

EXPANDO T is suitable for fixing Blum fittings to thin front materials in furniture manufacturing. With sufficient stability and strength, front materials of 8 mm thickness and above may be used.

### Disclaimer of liability

Blum accepts no liability for the use of EXPANDO T in combination with materials not listed or fittings from other manufacturers. It is recommended that the assembly be carried out by an experienced furniture manufacturer.

| Accessories         |      |          |            |
|---------------------|------|----------|------------|
| Hinge arm cover cap |      |          |            |
| Print/stamp         | Logo | Colour   | Part no    |
| Plain               | –    | NI   ONS | 70.4503    |
| Stamped             | Blum | NI       | 70.4503.BP |

| Hinge boss cover cap |          |         |
|----------------------|----------|---------|
| Hinge                | Colour   | Part no |
| CLIP top BLUMOTION   | NI   ONS | 70T4504 |
| CLIP top             | NI       | 70T4504 |

| Opening angle stop |                 |            |
|--------------------|-----------------|------------|
| Opening angle      | Colour          | Part no    |
| 85°                | Dark grey       | 70T4503    |
| 92°                | R7037 dust grey | 70T4503.09 |

The different overlay applications can be achieved with the appropriate fixing positions.

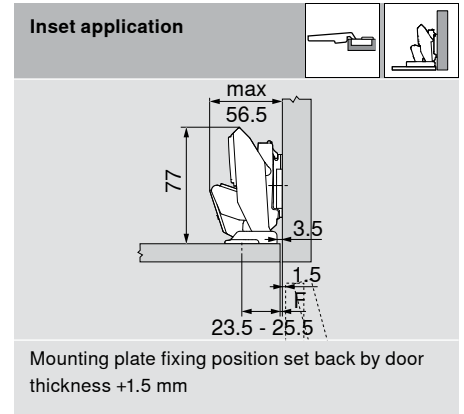
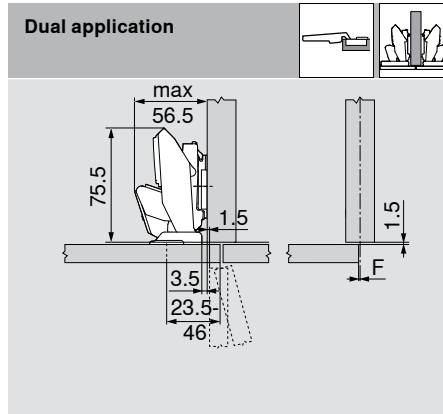
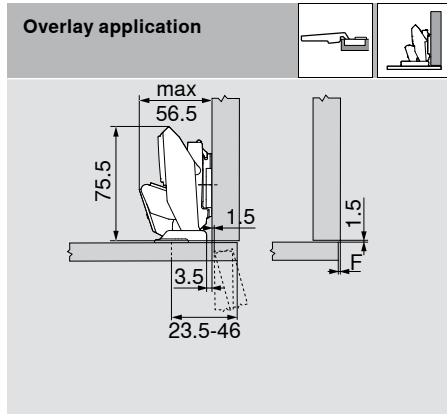
# CLIP top BLUMOTION for thin doors 110°



## Planning

### Hinge dimensions and gap calculation based on factory setting (mounting plate spacing = 0 mm)

Front protrusion at 90° opening angle



#### Fixing position

| MD | Front overlay FA (mm) |    |      |    |      |    |      |    |      |    |      |    |      |    |      |    |      |    |
|----|-----------------------|----|------|----|------|----|------|----|------|----|------|----|------|----|------|----|------|----|
|    | -3.5                  | -3 | -2.5 | -2 | -1.5 | -1 | 2.5  | 4  | 5.5  | 7  | 8.5  | 10 | 11.5 | 13 | 14.5 | 16 | 17.5 | 19 |
| 0  | 23.5                  | 24 | 24.5 | 25 | 25.5 | 26 | 29.5 | 31 | 32.5 | 34 | 35.5 | 37 | 38.5 | 40 | 41.5 | 43 | 44.5 | 46 |
| 3  | 26.5                  | 27 | 27.5 | 28 | 28.5 | 29 | 32.5 | 34 | 35.5 | 37 | 38.5 | 40 | 41.5 | 43 | 44.5 | 46 |      |    |
| 6  | 29.5                  | 30 | 30.5 | 31 | 31.5 | 32 | 35.5 | 37 | 38.5 | 40 | 41.5 | 43 | 44.5 | 46 |      |    |      |    |
| 9  | 32.5                  | 33 | 33.5 | 34 | 34.5 | 35 | 38.5 | 40 | 41.5 | 43 | 44.5 | 46 |      |    |      |    |      |    |

MD Mounting plate spacing (mm)

#### Mounting plate distance – panel/door thickness

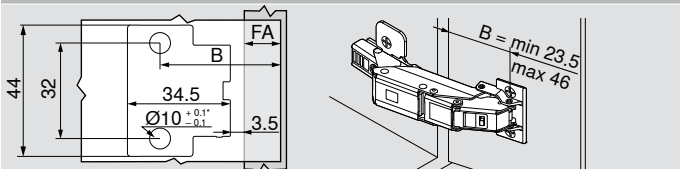
| Side panel thickness (mm) | Door thickness (mm) |   |    |    |    |    |    |
|---------------------------|---------------------|---|----|----|----|----|----|
|                           | 8                   | 9 | 10 | 11 | 12 | 13 | 14 |
| 15                        |                     |   |    |    |    |    |    |
| 16                        |                     |   |    |    |    |    |    |
| 17                        |                     |   |    |    |    |    |    |
| 18                        |                     |   |    |    |    |    |    |
| 19                        |                     |   |    |    |    |    |    |
| 20                        |                     |   |    |    |    |    |    |

The minimum gap is always 0 mm.

MD 0 mm possible       MD 3 mm required

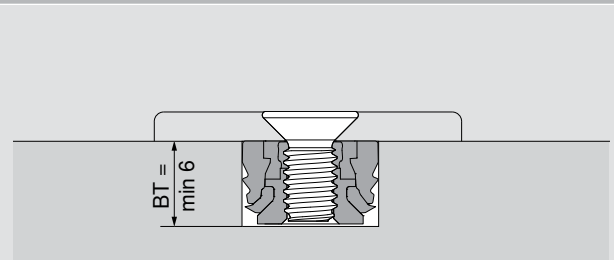
MD 6 mm required

#### Fixing position/drilling pattern EXPANDO T

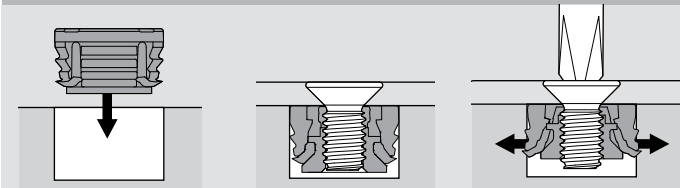


|    |                                      |
|----|--------------------------------------|
| FA | Front overlay                        |
| B  | Fixing position                      |
| MD | Mounting plate spacing (mm)          |
|    | $B = FA + 27 \text{ mm} + MD$        |
|    | * +0.2/-0.1 mm for stone and ceramic |

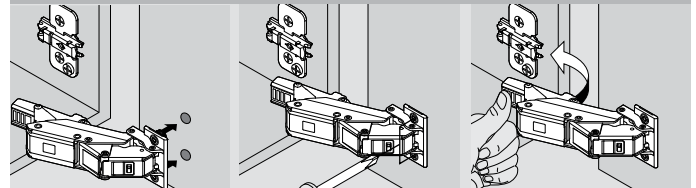
#### Drilling depth (BT)



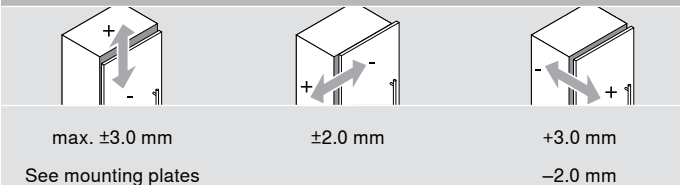
#### EXPANDO T assembly



#### Assembly



#### Adjustment



# CLIP top BLUMOTION for thin doors 110°



## Order specification Angled application

### Product



### Description

- Hinge for doors of 8–14 mm
- EXPANDO T fixing system for a variety of front materials from 8 mm
- CLIP top BLUMOTION with integrated BLUMOTION (and deactivation option)
- CLIP top with or without closing mechanism (spring)
- Tool-free mounting plate fixing
- 3-dimensional front adjustment

### Application

| Page instructions     |        |    |        |        |        |
|-----------------------|--------|----|--------|--------|--------|
| WA                    | Angle  | WA | Angle  |        |        |
|                       | -5°    |    | 5°     | 10°    | 15°    |
|                       | No 114 |    | No 115 | No 116 | No 117 |
|                       | No 110 |    | No 111 | No 112 | No 113 |
| WA angled application |        |    |        |        |        |

### Order specification

| Overlay application, dual application, inset application |           |        |               |           |
|--|-----------|--------|---------------|-----------|
| Boss   | EXPANDO T |        |               |           |
|  | Hinge     | Spring | Colour        | Part no   |
| CLIP top BLUMOTION                                       | ●         | NI     |               | 71B453T   |
| CLIP top   | ●         | NI     |               | 71T453T   |
| CLIP top   | ○         | NI     |               | 70T453.TL |
| ● With spring  |           | NI     | Nickel plated |           |
| ○ Unsprung   |           |        |               |           |

| Screw-on           |           |        |        |            |
|--------------------|-----------|--------|--------|------------|
| Boss               | EXPANDO T |        |        |            |
|                    | Hinge     | Spring | Colour | Part no    |
| CLIP top BLUMOTION | ●         | NI     |        | 71B4520    |
| CLIP top           | ●         | NI     |        | 71T4520    |
| CLIP top           | ○         | NI     |        | 70T4520.TL |

| Accessories         |      |        |            |  |
|---------------------|------|--------|------------|--|
| Hinge arm cover cap |      |        |            |  |
| Print/stamp         | Logo | Colour | Part no    |  |
| Plain               | –    | NI     | 70.4503    |  |
| Stamped             | Blum | NI     | 70.4503.BP |  |

| Hinge boss cover cap |        |         |  |
|----------------------|--------|---------|--|
| Hinge                | Colour | Part no |  |
| CLIP top BLUMOTION   | NI     | 70T4504 |  |
| CLIP top             | NI     | 70T4504 |  |

The different overlay applications can be achieved with the appropriate fixing positions.

#### Disclaimer of liability

Blum accepts no liability for the use of EXPANDO T in combination with materials not listed or fittings from other manufacturers. It is recommended that the assembly be carried out by an experienced furniture manufacturer.

#### Note

These dimensions are based on the factory setting, with a 12 mm thick front and 19 mm thick side panel. The overlay application changes in the case of deviation.

A trial application is recommended. Some applications require the mounting plate to be moved from the standard fixing position.

# CLIP top BLUMOTION for thin doors 110°



## Planning Angled application

**№ 114**  
-5°

| Description    | Spacing (mm) | Part no  |
|----------------|--------------|----------|
| Mounting plate | 0            | 173H7100 |
| Angled spacer  | -5° 1 x      | 171A5500 |

**№ 110**  
-5°

| Description    | Spacing (mm) | Part no  |
|----------------|--------------|----------|
| Mounting plate | 0            | 173H7100 |
| Angled spacer  | -5° 1 x      | 171A5500 |

**№ 115**  
5°

| Description    | Spacing (mm) | Part no  |
|----------------|--------------|----------|
| Mounting plate | 0            | 173H7100 |
| Angled spacer  | +5° 1 x      | 171A5010 |

**№ 111**  
5°

| Description    | Spacing (mm) | Part no  |
|----------------|--------------|----------|
| Mounting plate | 0            | 173H7100 |
| Angled spacer  | +5° 1 x      | 171A5010 |

**№ 116**  
10°

| Description    | Spacing (mm) | Part no  |
|----------------|--------------|----------|
| Mounting plate | 0            | 173H7100 |
| Angled spacer  | +5° 2 x      | 171A5010 |

**№ 112**  
10°

| Description    | Spacing (mm) | Part no  |
|----------------|--------------|----------|
| Mounting plate | 0            | 173H7100 |
| Angled spacer  | +5° 2 x      | 171A5010 |

**№ 117**  
15°

| Description    | Spacing (mm) | Part no  |
|----------------|--------------|----------|
| Mounting plate | 0            | 173H7100 |
| Angled spacer  | +5° 3 x      | 171A5010 |

**№ 113**  
15°

| Description    | Spacing (mm) | Part no  |
|----------------|--------------|----------|
| Mounting plate | 0            | 173H7100 |
| Angled spacer  | +5° 3 x      | 171A5010 |

**Adjustment**

| Adjustment          | Max. ± 3.0 mm | ± 2.0 mm | + 3.0 mm<br>- 2.0 mm |
|---------------------|---------------|----------|----------------------|
| See mounting plates |               |          |                      |

